

OUTDOOR HUNTING GUIDE



SPECIAL SUPPLEMENT TO

GASCONADE
COUNTY

Republican

WEDNESDAY, NOV. 1, 2023

Second annual Owensville Area Youth Hunt checks 83 deer

Josh Geisler of Geisler's Outdoor Mafia Firearms and Archery Sales organized and held the second annual Owensville Area Youth Hunt on Saturday at the Owensville Gun Club.

The event signed up 175 area youth and checked in 83 deer. The biggest buck scoring 146, was harvested by Cody Ham of Belle, and the biggest doe was harvested by Annie Linders of Leslie, weighing 110 lbs. Kannon Warren, was second, with a buck that scored 144¹/₈ and Caleb Lottmann, came in third, with a score of 134⁴/₈. Geisler's next event will be for the spring youth turkey season. Each hunter received a shirt and a hunting related prize. Winning firearms were awarded to the top three bucks, biggest doe and one hunter that harvested their first deer.

HARLEY GEISLER (right photo right) holds the antlers of his 8 point buck harvested during the youth hunt over the weekend. Also pictured is his sister Faye.



Custom Processing

Deer Processing

Your Meat, Your Way

Custom Deer Processing.

Your deer is tagged and labeled. We offer two types of bologna, two types of snack sticks and deer jerky. Sample are available. We will process your deer in **individual batches** it is not mixed together with all the deer that came in that day or that week. Your bologna, snack sticks, or jerky are made from your deer and only your deer.

Custom beef and hog processing.

If you didn't raise your own animal we can help you find one from a local farmer.

We are located 3 miles east of Hermann, just off Hwy 100 at 2401 Peace Valley Farm Road. Our normal hours are 8-4 Mon.-Fri. and 8-noon on Sat. but during deer season the **hours are extended**, a lot. Our home is next to the shop, so give us a call and we'll get you taken care of.

We look forward to processing your deer for you.

Good Luck Hunting!



Arlin Hoener
(573) 690-7860

www.5HCustomMeats.com

Hermann, MO
(573) 486-3070



Authorized
BOWTECH
Dealer

Jake Koelling, owner
1672 Kohrman Road
Owensville, MO 65066
573.680.2313

- Shooting Sports
- Archery Supplies
- Firearms, Optics
- Ammunition & Accessories
- NRA Recruiter & Instructor

Hours: M-Th. call or text
Fri: 5-8:30 pm, Sat: 9-3,
Sun. 10-2

*Hours may change depending on season



www.BagemAndTagemss.com • 573.680.2313

Young hunters harvest 11,118 deer during early youth portion of firearms deer season

BY JOE JEREK
MISSOURI DEPARTMENT OF CONSERVATION

JEFFERSON CITY, Mo. – Preliminary data from the Missouri Department of Conservation (MDC) shows that young hunters ages 6 through 15 harvested 11,118 deer during Missouri's early youth portion of the 2023 deer hunting season, Oct. 28 and 29. Top counties were Franklin with 258 deer harvested, Osage with 224, and Texas with 209. Of the deer harvested, 6,857 were antlered bucks, 3,410 were does, and 851 were button bucks.

Get more harvest information on the 2023 early youth portion at extra.mdc.mo.gov/widgets/harvest_table/.

Youth hunters harvested 13,877 during last year's early youth portion. Get more information on past seasons at mdc.mo.gov/

hunting-trapping/species/deer/deer-reports/deer-harvest-summaries.

"Although the rain this past weekend was desperately needed given how dry it's been this year throughout much of the state, it did put a damper on the early youth portion," said MDC's Cervid Program Supervisor Jason Isabelle.

Isabelle noted that the below average temperatures were conducive to good deer movement, but the combination of cooler temperatures and rainy conditions that persisted throughout much of the weekend likely reduced the amount of time many young hunters were able to spend afield.

Archery deer hunting continues through Nov. 10 and resumes Nov. 22 through Jan. 15, 2024. The November portion of firearms deer season runs Nov. 11-21 followed by the CWD portion, which is open in CWD Management Zone counties, Nov. 22-26.

The late youth portion runs Nov. 24-26. The late antlerless portion of firearms deer season runs Dec. 2-10 in open counties and the alternative methods portion will occur Dec. 23 through Jan. 2, 2024.

Get more information on Missouri deer hunting from MDC's 2023 Fall Deer and Turkey Hunting Regulations and Information booklet, available where hunting permits are sold and online at mdc.mo.gov/hunting-trapping/species/deer.

MDC invites landowners to a prescribed burn workshop in Owensville on Nov. 3

BY MADDIE EST
MISSOURI DEPARTMENT OF CONSERVATION

OWENSVILLE, Mo. – The Missouri Department of Conservation (MDC) invites landowners to a prescribed burn workshop Nov. 3 on a private property in Owensville. This event will begin at 10 a.m. and conclude around 3 p.m.

Prescribed burning can be a valuable tool for managing native plant diversity and controlling undesirable vegetation, but it can be dangerous and ineffective when not used properly. This workshop will provide basic information on how to plan and execute a prescribed burn for land management.

Registration for this event is required and can be done at <http://short.mdc.mo.gov/Z4v>.

Upon registration, participants will be asked to complete the virtual/online portion of the prescribed burn course. This online course is a mandatory prerequisite to the workshop, and there is a \$25 fee to complete the online learning. Participants are asked to bring their certificate of completion to the workshop. To find the online learning portion, go to <http://short.mdc.mo.gov/ZoU>.

A demonstration burn will be conducted at the workshop if weather allows, so please dress accordingly with leather boots, leather gloves, and a long sleeve shirt and pants made of natural fibers such as cotton or wool. Water and snacks will be provided.

Questions about this event can be sent to Ryan Wescott at ryan.wescott@mdc.mo.gov. The address for the property is 1963 Nursing Home Road in Owensville.

On the cover: First youth season and harvest

With patience and guidance from his dad, 6 year old Keever Schaning of Owensville, harvested his first deer on his grandparents farm in Owensville. Keever took the special shot Sunday morning to harvest an 8-point buck. He has been dreaming of this day and it happened.

Hunter's Special

DON'T FORGET ALL YOUR GEAR!





MUD GEAR
6ply ATV Tires
Starting at

\$112



Quadboss QBT846
Meets or exceeds DOT specifications
8-ply Radial Casing
Optimal performance for Mud & Hard terrain

\$151

Starting at



Established 1955
Jost Co. Inc.
Tire
Owensville, MO

**116 East Peters Avenue,
Owensville, MO 65066**
573.437.TIRE (8473)
573.437.3123





MDC reminds deer hunters of mandatory CWD sampling Nov. 11-12 and other key CWD information

BY JOE JEREK
MISSOURI DEPARTMENT OF CONSERVATION

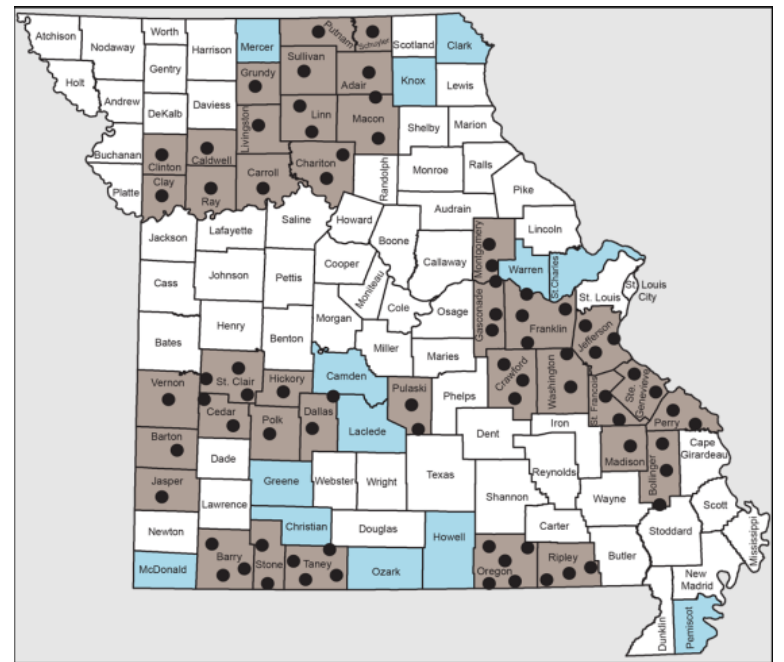
JEFFERSON CITY, Mo. – The Missouri Department of Conservation (MDC) reminds deer hunters that it will be again holding mandatory CWD sampling during opening weekend of the November portion of firearms season, Nov. 11 and 12. Hunters who harvest deer in 39 MDC CWD Management Zone counties are required to take their harvested deer or the head on the day of harvest to one of MDC’s numerous mandatory CWD sampling stations located throughout the CWD Management Zone. Sampling and test results are free.

CWD Management Zone counties for mandatory CWD sampling are: Adair, Barry, Barton, Bollinger,

Caldwell, Carroll, Cedar, Chariton, Clay, Clinton, Crawford, Dallas, Franklin, Gasconade, Grundy, Hickory, Jasper, Jefferson, Linn, Livingston, Macon, Madison, Montgomery, Oregon, Perry, Polk, Pulaski, Putnam, Ray, Ripley, Schuyler, St. Clair, St. Francois, Ste. Genevieve, Stone, Sullivan, Taney, Vernon, and Washington.

MDC designates counties where CWD has been found and counties within 10 miles of where CWD has been found as part of its CWD Management Zone.

CWD is a deadly, infectious disease in deer and other members of the deer family (cervids) that eventually kills all animals it infects. There is no vaccine or cure. CWD can be spread from direct deer-to-deer contact, through improper disposal of deer carcasses, and through the environment by deer contacting infectious material from other deer.



MDC DESIGNATES counties (shown in brown and blue) where CWD has been found and counties within 10 miles of where CWD has been found as part of its CWD Management Zone. Special regulations apply in these counties. MDC will be conducting mandatory sampling Nov. 11 and 12 in the brown counties with sampling stations shown by the dots.

Hunters play a critical role in helping MDC find and manage the disease by having their deer tested and following carcass-movement See **CWD** page 5B

BE WISE TO GUY WIRES

Did you know that guy wires on power poles provide grounding as well as support? Damaging a guy wire can cause an electric current disruption, creating a dangerous situation.

Observe the 10-foot rule and stay clear of guy wires and overhead power lines. If a guy wire is broken, do not try to fix it yourself. Call the professionals at your electric cooperative.

Putting **Members First** by keeping you safe.



Three Rivers Electric Cooperative
with offices in Linn & Brazito



A Touchstone Energy® Cooperative



Members 1st
www.MembersFirst.coop

NEED A NEW HUNTING PARTNER?



Shop on line at www.PrecisionOwensville.com, or give us a call!

Precision Water & Power Sports²

573-437-4350

Hwy 50 West of Jefferson City & 1102 W. Highway 28 • Owensville

CWD • from page 4B

restrictions and other CWD regulations. Learn more at mdc.mo.gov/cwd.

Mandatory CWD Sampling Nov. 11 and 12

“Mandatory CWD sampling significantly increases the number of tissue samples we can collect in a relatively short period of time,” said MDC Cervid Program Supervisor Jason Isabelle. “The large number of samples collected during mandatory CWD sampling gives us a solid understanding of the distribution and prevalence of the disease — where it is and how many deer may have it. It can also help us find new cases in new areas so disease management can begin as soon as possible to slow the spread of CWD and protect Missouri’s deer population.”

According to MDC, opening weekend of the November portion of firearms deer season is the most popular two hunting days for most deer hunters in Missouri. Hunters take about a third of the state’s total annual deer harvest during those two days.

“Focusing on this key weekend gives us the best opportunity to collect the most tissue samples during a very concentrated time period,” said Isabelle.

He explained that hunters harvesting deer on Nov. 11 and 12 in counties where mandatory CWD sampling will occur can present their deer at a mandatory CWD sampling station within the county of harvest, or at a station in a different county if they follow the carcass movement restrictions. Deer that will end up being delivered to a licensed meat processor within 48 hours or deer heads that

will be delivered to a licensed taxidermist within 48 hours may be transported to a sampling station in any county. For deer that will not be taken to a licensed taxidermist, hunters may also take the head to a mandatory CWD sampling station in another county as long as the head is left at the station after sampling.

Find mandatory CWD sampling station locations online at mdc.mo.gov/cwd, or in MDC’s 2023 Fall Deer & Turkey Hunting Regulations and Information booklet, available where permits are sold.

CWD sampling takes only a few minutes and consists of MDC staff cutting an incision across the neck of harvested deer to remove lymph nodes for testing. Tissue samples are sent to an independent lab for testing.

Hunters will be given a card with information on getting free test results for their deer after samples are processed. Hunters can get their CWD test results for free online at mdc.mo.gov/cwdResults. While test results make take up to four weeks, most are available within two weeks.

Hunters presenting bucks bound for taxidermy should inform MDC staff. Staff will complete paperwork and inform the hunters about participating taxidermists taking CWD tissue samples. Another option is to remove the cape before taking the deer to a sampling station.

Before arriving at a mandatory CWD sampling station:

- Field dress and Telecheck deer.
- Bring the carcass or just the head.
- Capes may be removed in preparation for taxidermy prior to arriving at a station.

- Position deer in vehicles with head and neck easily accessible.
- Be sure the person who harvested the deer is present.
- Be prepared to find the location of harvest on a map.
- If using a paper permit, have it detached from the deer for easy access.
- If using the MO Hunting app, have permit information available.

Carcass Movement Restrictions

Hunters must follow carcass-movement restrictions for deer harvested in CWD Management Zone counties:

- Deer must be Telechecked before any parts of the carcass may be transported out of the county of harvest.
- Whole carcasses may only be transported out of the county of harvest if delivered to a licensed meat processor within 48 hours of exiting the county of harvest.
- Deer heads containing muscle and brain tissue may only be transported out of the county of harvest if delivered to a licensed taxidermist or an approved CWD sampling station within 48 hours of exiting the county of harvest. However, on Nov. 11-12, for counties in which sampling is mandatory, deer, or the head, must be taken on the day of harvest to a mandatory CWD sampling station.
- The following carcass parts may be moved outside of the county of harvest without restriction:
- Meat that is cut and wrapped or that has been

See **CWD** page 11B

Land Clearing and Forestry Mulching Services:



- Land Clearing
- Invasive Species Removal
- Fence line clearing
- Clear Hunting Plots
- Underbrush Removal
- Trail Creation and Maintenance
- Clean up around ponds and dams
- Reclaim Pasture
- Clean Up After Logging
- Utility Easement Clearing
- Real Estate Beautification

Start enjoying your land the way you’ve always dreamed of with help from Missouri Brush Control. Forestry Mulching is an eco-friendly land clearing method that is much faster, more efficient and cost effective than clearing by hand or with conventional methods. We can eliminate unwanted trees and brush by grinding invasive vegetation and trees where they stand. This approach minimizes soil disruption and preserves desirable trees. The mulch left behind protects from erosion, as well as suppresses weeds and unwanted regrowth. To learn more about our land clearing methods and how we can help your land, please give us a call or check out our website today



Before



After



Missouri Brush Control: 636-393-8589
www.MissouriBrushControl.com

DRIFTWOOD OUTDOORS

November is the month for hunting the Midwest

November is the month we are reminded to be thankful for all of our blessings. And as sportsmen in the Midwest, we have a long list. Firearms deer seasons are open across the region, with arguably the best white-tailed deer hunting in the country happening in the Midwest during November. Duck hunters are spreading out decoy sets this time of year, and upland bird hunters are burning boot leather all over the plains. Fishing is still hot on open water in the lower reaches of the region, while ice anglers are chomping at the bit to get out on the ice up north. When it comes to being blessed with outdoor opportunity, November is a special month to be thankful for.

Illinois — Firearms Deer

The Land of Lincoln has long been a top producer of trophy white-tailed bucks. The state doesn't give hunters a large quantity of days to hunt with a firearm. The split season runs Nov. 17–19 and open again Nov. 30–Dec. 3. What the state lacks in days to hunt, it makes up for in quality of deer.



by **BRANDON BUTLER**

Giant bucks can be found anywhere in the state, but the west-central region, which I is home to Pike and Brown counties, is a top producer of record book bucks. There are a number of public hunting opportunities at Fish and Wildlife Areas along the Mississippi River and the Illinois River that all have the potential of producing giant bucks.

Iowa — Quail

The rush of the flush is speeds up a hunter's heartbeat like few other outdoor experiences. It's true, bobwhite quail numbers are far from what they used to be across much of the Midwest, but that doesn't mean good hunting is gone. There are pockets of healthy quail populations in Iowa, especially in the southwest part of the state. A good bird dog helps locate coveys, but a simply walking field edge and brushy fence rows can produce excellent wing-shooting for the upland hunter without a canine companion. Quail season is open the entire month of November. Hunters may harvest 8 birds per day with a possession limit of 16.

Kansas — Ducks

With 27 species of ducks cruising through Kansas air space, hunters never know what may head for their decoys next. Mallards, northern pintails, teal, and gadwall are the most common. Duck season is open across Kansas throughout November, except in the Southeast Zone, where duck season doesn't open until Nov. 11. Hunters can harvest six ducks, but there are limits to different species, so make sure you understand the regulations. The northeast corner of the state, along the Missouri River, offers excellent duck hunting. Cheyenne Bottoms, near Great Bend, is a famous waterfowl destination.

Minnesota — Pheasants

Minnesota may not be its neighbor to the west, but that doesn't mean the southern portion of the state doesn't have good pheasant hunting. The season is open the entire month of November, and the limit at the time is two roosters per day. Hunters must possess a Pheasant stamp and small game license. Shooting hours are 9 a.m. to sunset. Minnesota has a lot of public land and Walk-In land that holds pheasants. On the DNR website, you can search for WMAs by county and species. This tool will help you find a few pheasant spots close to home.

Wisconsin — Firearms Deer

See **Butler** page 7B

Get Your ATV or UTV ready for HUNTING SEASON

Service All Makes & Models of:

- ATVs/UTVs • Motorcycles
- Side-by-Sides
- Go Carts • Golf Carts

POWERSPORTS Service & Repair

Kirk Terrill ~ 30+ Years Experience

1490 Hwy. 28 • Bland, Mo. • 573.789.6593

2 Miles West of Owensville on Hwy. 28 at The Canaan Pawn complex

WILDFLOWER CAFÉ

Welcome Deer Hunters

Open 4 am for Breakfast

Opening Day of Deer Season:

Saturday Nov. 11

Reg. Hours 7 am to 2 pm.

Thurs. thru Tues.

207 N. First Street | Owensville | 573-437-5500

HALE'S

Hook and Hunt

927 E. Main (next to Post Office)
Linn, Mo. • 573-897-0777

ONE OF THE LARGEST SELECTIONS OF CROSS BOWS IN CENTRAL MISSOURI

Direct dealer with Ravin, Killer Instinct, and Mission by Mathews

STORE HOURS:

TUE., - FRI., 10 A.M. TO 5:00 P.M.

SAT., 9 A.M. TO 3 P.M. •

CLOSED SUNDAY AND MONDAY

Catch us if you can! ®

Mission made by Mathews

Celebrating 25 years in business



PHOTO COURTESY OF BRANDON BUTLER

COUNTING BIRDS is an enjoyable and scientifically impactful way to enjoy the outdoors.

Wisconsin is widely recognized a national powerhouse of white-tailed bucks. The state grows bruisers with numerous Boone & Crockett caliber bucks hitting the dirt each year. Most of those are taken during gun season. This year, gun season runs November 18 – 26. Buffalo County has long been known to be a big buck producing destination. Tiffany

Wildlife Area and Big Swamp Wildlife Area are two pieces of public ground in Buffalo County. Both are capable of producing a buck of a lifetime.

See you down the trail...

For more Driftwood Outdoors, check out the podcast on www.driftwoodoutdoors.com or anywhere podcasts are streamed.

MDC stresses safety for non-hunters during hunting seasons

JEFFERSON CITY – With deer and turkey hunting underway in Missouri, the Missouri Department of Conservation (MDC) reminds non-hunters to practice safety measures when afield during hunting seasons.

“Safety while hunting is ultimately the responsibility of the hunter,” MDC Hunter Education Coordinator Justin McGuire said. “Hunters must clearly identify their targeted game animals before even putting their fingers on the triggers of their firearms or before drawing their bows when archery hunting. They must also be aware of what is behind their targets and should never shoot at movement or sound.”

McGuire added that non-hunters out in hunting areas can also practice some safety measures. He and MDC offer these safety tips for non-hunters:

- Wear bright clothing to be more visible, such as a bright orange hat, jacket, or pack.
- Place a bright orange vest or bandana on the canines who join you and keep them leashed.
- Avoid earth-toned or animal-colored clothing such as tan and brown.
- Be aware that hunters are often most active during the early morning and late afternoon, when game animals are most active.

Be especially aware of your own visibility during these times when light is dim.

- Stay on designated trails. Trails are designed to improve the safety of public users and to protect sensitive habitats. Enjoying recreational activities only on designated trails will reduce the likelihood of entering hunting areas.


- Whenever venturing into the outdoors, let someone know where you are going and when to expect your return.

- Make yourself known. If you hear shooting, raise your voice, and let hunters know you are in the area.

- Be courteous. Once a hunter is aware of your presence, don't make unnecessary noise to disturb wildlife. Avoid conflict.


- Identify hunting seasons and lands open to hunting. Learn where and when hunting is taking place. Plan your recreation activities based on this information. Find information on Missouri hunting seasons at mo.gov/hunting-trapping.

- Find conservation areas that allow hunting and those that do not by using the MDC Places to Go web feature at mo.gov/discover-nature/places.



MOSSY OAK[®] PROPERTIES

Central Missouri Land, Home & Auctions
America's Land Specialist




Selling Central Missouri Land & Homes

Owner/Broker
DeWayne Sprenger

Office Number	573/635-3544
Agent Brendan Baker	573/353-7288
Agent Bob Roark	573/694-0418
Agent Hayden Lee	573/644-4065
Agent Sierra Johnson	573/645-4911
Agent Denise Nolte	573/291-2002

Scan the QR Code with your smartphone's camera to view listing and learn more about our agents.



OUTDOORS IN THE OZARKS

'Hunt no ducks over water!'

A couple of weeks ago I was talking with guide in Ontario who got a good laugh out of the bear hunting which forbids using bait. He said that without bait, few bears would ever be killed anywhere. In Canada, if you go through an outfitter you are guaranteed to get a shot or several shots, at a bear the first day. But they are always killed over bait.



by **LARRY DABLEMONT**

Lee Arch, a full-blooded Ojibway guide, says no one kills one to eat, as bear that are eating garbage or fish entrails from bait sites are not fit to eat. They are killed only for their pelt, and the making of bear rugs. Bush Pilot and guide Tinker Helseth said that his dad told him when he was a boy, "eat deer, grouse, moose, ducks and geese and fish, then you won't have to eat bear unless you are starving." Twelve-year old Wiley Williams got himself a bear last

year, sitting high in a deer stand at the edge of the National Forestland in Christian County. He said his family had land there and had found a 'marker tree' which are used by bears which claw the tree as high as they can and use it as a scent post as well. Wiley watched the tree all day and his bear came to it at 3 o'clock. He said he had to shoot it three times to kill it. His mother says they kept the hide and want to have it mounted but that expense is great. Wiley said they didn't eat any of it. He told me it smelled really bad.

Old-time bear hunter Mike Dodson from Valley Springs Arkansas has killed seven bears, all of them over bait in September in Arkansas' National Forest; all of them with a bow. He says if there are bears killed in Missouri, they are killed over bait, whether the hunters admit it or not. "Without bait, there is no chance of killing one," he told me, "I found out that piles of popcorn beats anything else."

Mike said he wouldn't waste a dollar on a bear tag if dogs and baiting were prohibited. He said it was like passing a law prohibiting duck hunting over water. I have done some bear hunting in Canada with my camera

but there is always a community dump in the background or fish entrail buckets close by. One night I arrived at Tinker Helseth's lodge in Nestor Falls Canada after midnight, so to keep from waking anyone I just slept behind the front seat of my crew-cab pickup, in a very comfortable bed I keep there when I travel. My Labrador was sleeping in the front seat, and his growls awakened me. I felt the pick-up lurch, sat up and opened the frost-covered back window. A black bear was looking back at me, only inches from my face. He stood up tall, clutching a 10-pound bag of dog food in his arms, then jumped over the tailgate and disappeared.

There isn't room here to tell about the bear attack that occurred in North Arkansas a few years back. You can read about that on my website. I often write 2 or 3 columns per week, not just this one, and you can read all of them on your computer at... larrydablemontoutdoors.blogspot.com. I urge readers to find it on the Internet and read it each week. On that site you can find out how the Missouri Department of Conservation used the idea of a bear season and the elk season to garner nearly 200 thousand dollars in funds from Missouri hunters who never got to hunt either.

Only five elk and eight bears were killed to gain that

See **Dablemont** page 9B

COUNTY SEAT MOTORS

1 Hwy. 50 E • Union • (636) 583-2223

DEER HUNTER SPECIALS

620 Hwy. 50 W • Union • (636) 583-6561



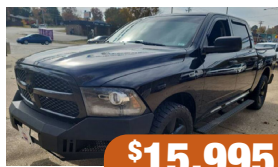
\$6,995

'16 CHEVY TRAX LT
1.4L Turbo Charge,
Auto 6 Speed, AWD,
#P11189



\$19,995

'16 FORD TRANSIT 350
V8, Auto 6 Speed, RWD, Fuel
Flex, Low Roof Cargo Van,
#P11163



\$15,995

'14 RAM 1500 EXPRESS
4x4 Express 4dr Crew Cab
5.5 ft. SB Pickup, #P11191A



\$13,995

'07 GMC SIERRA
2500HD CLASSIC SL1
6.0L V8, Auto 4 Speed, RWD
Extended Cab SB #P11157



\$6,995

2016 JEEP PATRIOT
SPORT
2.0L, CVT, FWD,
#P11188



\$21,495

'19 CHEVROLET
SILVERADO 1500 LD LT
4x2 LT 4dr Double Cab 6.5 ft.
SB Auto 6 Speed, #P11166



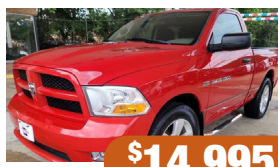
\$15,995

'1999 CHEVROLET
CORVETTE
Manual 6-Speed, 5.7L V8
#P11192



\$31,995

'17 CHEVY TAHOE
PREMIER
4x4 Premier 4dr SUV.,
Auto 6 Speed #P11152



\$14,995

'11 RAM 1500 ST
4x2 ST 2dr Regular Cab
6.3 ft. SB Pickup, Auto 5
Speed #P11171



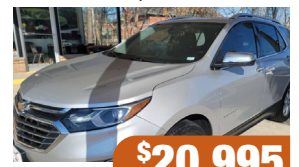
\$29,995

'2016 CHEVY TAHOE LTZ
4x4, LTZ, 4dr, SUV, Auto
6 Speed #P11126



\$23,995

'18 FORD F-150 XLT
4x4, XLT, 4dr, SuperCrew,
5.5 ft. SB #P11172



\$20,995

'2020 CHEVY
EQUINOX PREMIER
4x4, Premier 4dr SUV w/1LZ,
Auto 5 Speed # P11109



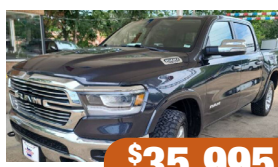
\$12,995

'08 CHEVY EXPRESS 3500
3500 2dr Com/Cutaway/
Chassis 139-177 in. WB
#P11117



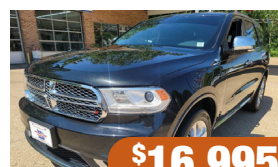
\$17,995

'18 DODGE JOURNEY
CROSSROAD
AWD Crossroad 4dr SUV,
Auto 6 Speed #P11063



\$35,995

'19 RAM 1500 LARAMIE
4x4, 4dr Crew Cab 5.6 ft.
SB Pickup, Auto 8 Speed
#P11167



\$16,995

'16 DODGE DURANGO
CITADEL
AWD Citadel 4dr SUV, Auto
8 Speed #P10881

**Check Out Our Full Inventory
in HD Online at www.countyseatmotorsinc.com**
**3 (of 100) Great Reasons to Buy From
County Seat:**
1) Selection 2) Credit Union Financing*
3) Service Protection Plans
facebook.com/CountySeatMotorsUnion



PHOTOS COURTESY MISSOURI DEPARTMENT OF CONSERVATION

MDC reports Missouri hunters harvested 12 black bears this season

BY JOE JEREK
MISSOURI DEPARTMENT OF CONSERVATION

JEFFERSON CITY, Mo. – The Missouri Department of Conservation (MDC) reports that Missouri hunters harvested 12 black bears during the state’s third bear-hunting season, Oct. 16–25.

More than 5,370 hunters applied during May for 400 permits for the season with the maximum total harvest being 40 bears. Of the 400 hunters selected through a random drawing of all applicants, 342 hunters purchased permits for the season.

Bear hunting in Missouri is limited to Missouri residents and restricted to three designated areas of southern Missouri called Bear Management Zones (BMZ). Each permit issued is for a specific BMZ and hunting is limited to public or private property within the BMZ.

Nine bears were harvested in BMZ 1 out of a maximum of 20 with 173 hunters purchasing permits to hunt the zone. Three bears were harvested in BMZ 2 out of a maximum of 15 with 125 hunters purchasing permits to hunt the zone. No bears were harvested in BMZ 3 out of a maximum of 5 with 44 hunters purchasing permits to hunt the zone.

All bears were harvested using firearms methods. Of the 12 bears harvested, three were boars (males) and nine were sows (female).

“We had another successful black bear hunting season this year and saw bears harvested in four new counties where bears had not been previously harvested,” said MDC Bear Biologist Nate Bowersock. “Conditions this season couldn’t have been much better for hunters, and we look forward to hearing from hunters about their experiences through our annual post-season survey.”

Learn more about Missouri black bears and bear hunting in Missouri at mdc.mo.gov/hunting-trapping/species/bear.

Dabelmont • from page 8B

money. It was paid by about 20,000 Missourians. Of those who pay that in the future, 98 percent of them will never get to hunt either. That fact has not, and can not, be printed in any Missouri newspaper, so find the details on that Internet site.

This year, almost 9 thousand applicants have sent in 10 dollars each to have a chance at 4 elk tags. A fifth elk tag is given to a ‘local landowner’ who is not named. Guess who that unnamed landowner is!! Read the website at www.larrydablemont.com.

Bill's Bucks & Beards

Bringing Your Trophy to Life!

Bill Vogt
Certified Taxidermist

Best Price
Great Service
Fast Turn Around

Specializing in Deer & Turkeys

Owensville, Missouri • 573-437-5676

Trust in a company whose name has become synonymous with the task.
That's performance. That's reputation. That's Bush Hog®.

“RAZORBACK”
SINGLE SPINDLE
ROTARY
CUTTERS
BH SERIES

BH14 BH15 and BH16

The Razorback-Series has Bush Hog's legendary durability and reliability built into each of the three models. Ideal for weeds, grass, and up to 1-inch diameter brush, these models are economically priced for use around estates and small farms. The price and value of the Razorback Series units once again prove that nothing beats a Bush Hog!

Since 1951, Bush Hog® has been proudly building superior farm implements in Selma, Alabama!

“ROTO HOG”
TILLERS
RTG AND
GR SERIES

RT60G

The gear driven “ROTO HOG” by Bush Hog® are built Bush Hog® tough for years of dependable service. Available in standard or reverse till, there is a model that will fit your application. In ground cover conditions, a reverse till model works best because the flow of material tends to cover the chopped groundcover for quicker decomposition. The standard six blades per flange on every model gives the maximum breakup of soil even in hard or packed conditions. The heavy duty gear drive alleviates worries about the durability of a chain drive in the same tough conditions. The “ROTO HOG” is the perfect tool for landscape work, seed beds, or any other application that requires that the soil be pulverized. Available in red, orange, blue and green.

Rosebud Tractor & Equipment Company
241 Hwy. 50 Rosebud, Mo.
573-764-3393

RTE of Linn
1325 Main Street Linn, Mo.
573-764-2249

RTE of Morrison
1073 Hwy. 100
Morrison, Mo.
573-294-7191

ROSEBUD TRACTOR

www.RosebudTractor.com

BUSH HOG®
Performance You Can Count On™
www.bushhog.com

Built BUSH HOG TOUGH
in Selma, Alabama

Learn about backyard birds at Nov. 7 MDC virtual program

**BY FRANCIS SKALICKY
MISSOURI DEPARTMENT OF
CONSERVATION**

SPRINGFIELD, Mo. – In winter, backyards can be great places to view and to learn about birds.

People can get information about the bird-viewing opportunities that can be found in their backyards on Nov. 7 at the Missouri Department of Conservation (MDC) virtual program “Birds: Backyard Birds.” This online program will be from 3:30-4:15 p.m. and is being put on by the staff at MDC’s Springfield Conservation Nature Center. People can register for this program at:

<https://mdc-event-web.s3.amazonaws.com/Event/EventDetails/195499>

At this program, MDC Naturalist Sam Grove will discuss common winter bird species that typically

can be found in backyards and how you can attract them. Grove will also talk about how backyard bird observers can provide valuable data for Project FeederWatch. Project FeederWatch is operated by the Cornell Lab of Ornithology and Bird Studies Canada. It is a winter-long survey of birds that visit feeders at backyards, nature centers, community areas, and other sites across North America. Participants periodically count birds they see at their feeders from November through April and send their information to Project FeederWatch. This widespread collection of data helps biologists track broad-scale movements of winter bird populations. It also provides valuable information about long-term trends in bird distribution and abundance.

Though the MDC Nov. 7 virtual program is free, registration is re-

quired to participate. Use the link above. Registrants must provide an e-mail, so a program link can be sent to them. This program will include a chat-based question-and-answer period where participants can interact with the presenters.

MDC’s Springfield Conservation Nature Center is located at 4601 S. Nature Center Way. People wanting more information about this program or other upcoming events at the nature center can call 417-888-4237. People can also call this number to get signed up for text alerts and e-mail bulletins about upcoming programs at the Springfield Conservation Nature Center and other nearby MDC facilities.

Staff at MDC facilities across the state are holding in-person and virtual programs. A listing of these programs can be found at mdc.mo.gov/events.



PEOPLE CAN learn how to attract house finches (pictured above) and other birds to their backyard feeders at an MCD virtual program on Nov. 7.



573-732-5100
BOURBONRV.COM

**This Is The Year To...
Hunt In Comfort!**

MENTION THIS AD AND GET 4TH NIGHT FREE!



First-Timers Welcome
Hitch Included • Delivery Available



**FALLTASTIC
SAVINGS**

**2022's & 2023's Deeply Discounted
Trades Always Welcome
Financing Available
Lowest Prices of the Year!**

PARTS • SALES • SERVICE • RENTALS

**Hunting for a
Great Trailer to
haul your gear?**





Look no further.



2073 South Highway 19 • Swiss, MO • 573-486-0212
www.JT-Trailers.com | [@JandTTrailers](https://www.facebook.com/JandTTrailers)

CWD • from page 5B

boned out.

- Quarters or other portions of meat with no part of the spinal column or head attached.
- Hides from which all excess tissue has been removed.
- Antlers or antlers attached to skull plates or skulls cleaned of all muscle and brain tissue.
- Finished taxidermy products.

CWD Sampling and Testing All Season

“As part of our efforts to find cases of CWD early so management can be implemented quickly to help slow its spread, MDC is again offering free voluntary CWD sampling and testing of harvested deer during the entire deer season at select locations throughout the state, including some MDC offices and participating taxidermists and meat processors,” said Isabelle.

He added that MDC also offers self-service freezer head-drop locations within the CWD Management Zone for hunters to deposit harvested deer heads to have tested for CWD. Instructions, packing supplies, and information tags are available at the sites. Freezer head-drop stations will be closed on Nov. 11-12 in mandatory sampling counties when hunters must present their deer or deer head at a mandatory CWD sampling station. Freezer head-drop stations will remain open on Nov. 11-12 in CWD Management Zone counties where sampling is not mandatory. Get more information on sampling and head-drop locations online at mdc.mo.gov/cwd.

Hunters can get their CWD test results for free online at mdc.mo.gov/cwdResults. Results are available within four weeks or less from the time of sampling.

Share the Harvest

MDC encourages deer hunters to share their harvests by donating surplus venison to the Share the Harvest program to help feed hungry Missourians. The donated deer meat goes to local food banks and food pantries to help feed hungry Missourians all around the state. To get Share the Harvest venison, contact local food banks or food pantries.

Deer harvested from CWD Management Zone counties may only be donated to Share the Harvest if they are tested for CWD. Donations must go to a meat processor participating in the Share the Harvest CWD Testing Program. Deer harvested outside of the CWD Management Zone do not need to be tested for donation to Share the Harvest and may be taken to any Share the Harvest processor. For more information, visit MDC online at mdc.mo.gov/share.

MDC Offices Closed Nov. 10

MDC offices will be closed for permit sales and other activities on Friday, Nov. 10, in recognition of Veterans Day. Shooting ranges will remain open. MDC regional offices and shooting ranges will be open on Saturday, Nov. 11.

MDC will provide a staffed customer-service call center from 8 a.m. to 5 p.m. from Friday, Nov. 10, through Sunday, Nov. 12, at 573-751-4115.

Buy Missouri hunting and fishing permits from numerous vendors around the state, online at mdc.mo.gov/permits, or through MDC's free mobile app, MO Hunting, available for download through Google Play or the App Store.

Send Us Your Game Pictures

Did your child get something this deer or turkey season you're proud of? Send it to us. We'll help you show it off!

Email your photo to: wardpub@fidnet.com

or bring it by our office at

106 E. Washington, Owensville.

GASCONADE COUNTY
Republican

Firearm Safety

With fall firearms season approaching, now is an ideal time to spend some time with your hunting weapons at the rifle range getting reacquainted with them.

Now is also the appropriate time to stress firearm safety and range etiquette. When handling firearms always remember the

10 Commandments of Gun Safety:

1. Always keep the muzzle pointed in a safe direction.
2. Firearms should be unloaded when not in use.
3. Don't rely on your guns "safety". Treat every gun as though it can fire at any time, regardless of pressure on the trigger.
4. Be sure of your target and what is beyond it.
5. Always use correct ammunition.
6. If your gun fails to fire when the trigger is pulled, handle with care.
7. Always wear eye and ear protection when shooting.
8. Be sure the barrel is clear of obstructions before shooting.
9. Don't alter or modify your gun. Have it serviced regularly by a qualified gunsmith.
10. Learn the mechanical and handling characteristics of the firearm you are using before going afield with it. Not all guns are the same.

SHOOTING EVENTS INCLUDE:

Trap, Skeet, Sporting Clays, Vintage Rifle, M1 Garand & M1 Carbine Matches

For more information and a schedule of matches visit our web site at: www.owensvillegunclub.org.

Application for Membership OWENSVILLE GUN CLUB

TOTAL DUE FOR
1ST YEAR - \$70

Cost of membership is \$70 (\$50 membership fee and \$20 annual maintenance fee, due each Feb.). To join fill out the form below with check payable to Owensville Gun Club and mail to Owensville Gun Club, P.O. Box 518, Owensville, MO 65066.

I certify by signature that I am at least 18 years of age, and that I can legally own, and or possess firearms as specified in all Federal, State and Local Laws. I Further agree to abide by all club bylaws and range rules.

SIGNATURE: _____

DATED: _____ D.O.B. _____

NAME: _____

ADDRESS: _____

CITY: _____ STATE: _____

ZIP: _____ PHONE: _____

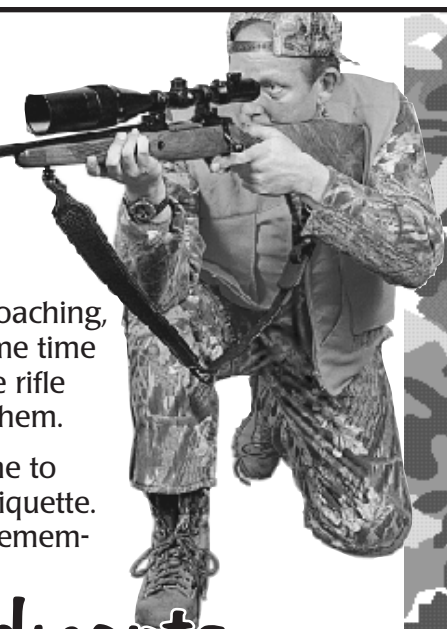
CELL PHONE: _____
PLEASE PRINT

RECEIVED BY: _____ DATE _____

MEMBERSHIP APPROVAL DATE: _____

Maintenance Card Mailed _____

Membership Card Mailed _____





BRODY CHRISTENSEN, photofar left, shows off the buck he harvested and checked at the Owensville Second Annual Youth Deer Hunt on Saturday. Also showing off his buck is **SAWYER CHRISTOPHER**, left, from Bland.

YOUTH DEER hunt photos are published at no charge, as space permits, in the Gasconade County Republican. Text photos to 573-619-9076 or email dwarden@wardpub.com. Please include the hunter's name and age, buck or doe, where the hunter is from, who they hunted with and if this is their first deer or buck.

GEAR UP



Your most important piece of gear is the one that gets you there!



Call 888-540-1095 for your No-Obligation Price Quote from our sales team.

HERMANN FORD

 614 Market Street • Hermann, MO 65041
573-486-3113 • www.HermannFord.com

Hunting Blind Outfitters of Missouri

573-619-2216



The **LARGEST** Hunting Blind Dealer in the state of Missouri



HuntingBlindsForSale.com



PHOTOS COURTESY MISSOURI DEPARTMENT OF CONSERVATION

MDC'S ANNUAL winter trout program begins Nov. 1 (today) following the stocking of nearly 9,100 rainbow trout in four southeast Missouri waters.

MDC to stock nearly 9,100 rainbow trout in four SE Missouri waters

BY JOSH HARTWIG
MISSOURI DEPARTMENT OF
CONSERVATION

CAPE GIRARDEAU, Mo. – The Missouri Department of Conservation's (MDC) annual winter trout program begins Nov. 1 following the stocking of nearly 9,100 rainbow trout in four southeast Missouri waters – Perryville's Legion Lake, Jackson's Rotary Lake, Farmington's Giessing Lake, and the Sikeston Recreation Complex Pond.

The cities of Jackson, Farmington, and Perryville, including Perry County, Perry County Sportsman Club, Sikeston, and MDC purchased the trout.

"Trout are not native to Missouri," said MDC Fisheries Biologist Salvador Mondragon. "They have been introduced to our cold, spring-fed, Missouri streams. In winter, when the water is cold enough, specific lakes and ponds in urban areas are stocked to provide close-to-home trout fishing opportunities."

Mondragon said roughly 3,760 rainbow trout will be stocked during the first week in November in Legion Lake prior to the opener; 1,920 trout will be stocked in Rotary Lake; 1,240 in Giessing Lake; and 2,240 at Sikeston Recreation Complex Pond.

Anglers can cast a line for this popular cold-water fish through the fall and winter months on a catch-and-release basis. Anglers may harvest trout beginning Feb. 1, 2024.

All trout must be immediately released unharmed Nov. 1 through Jan. 31, 2024. During this time, anglers may only use flies, artificial lures, and unscented plastic baits. Only one fishing rod may be used at a time, and chum is not permitted. Beginning Feb. 1, 2024, any bait may be used, and four trout may be kept regardless of size.

All anglers between the ages of 16 and 64 must retain a valid Missouri fishing permit and any angler harvesting trout must also possess a trout permit.

More information about fishing can be found online at <https://mdc.mo.gov/fishing>, and by contacting MDC's Southeast Regional Office in Cape Girardeau at (573) 290-5730.

SPORTS AFIELD
Established 1887
REAL ESTATE

DALE STRUEMPH

Managing Broker | Land Specialist

- ☎ (573) 680-0878
- ✉ dale@sportsafieldre.com
- 📍 sportsafieldre.com
- 📍 Licensed in Missouri & Kansas



B&H

Well Drilling & Pump Service Inc.

- Now Drilling Alluvial Irrigation Wells
- Complete Water Well Installation
- Repair On Existing Equipment
- Geo Thermal Wells & Looping
- Cobett Waterers and Water Lines Installed

**We Hope We
Can Help In The
Future!**

*Serving all of
Mid Missouri*

**FREE ESTIMATES
ON NEW WELLS**

573-455-9111
bhwelldrilling.com

**Call 573-437-2323 today to subscribe to
the Gasconade County Republican**

Nov. 2 MDC virtual program offers tips for processing deer

BY FRANCIS SKALICKY
MISSOURI DEPARTMENT OF
CONSERVATION

SPRINGFIELD, Mo. — Once a hunter has bagged a deer, the work is only half over. How to field dress it, skin it, process the meat and store it for future tasty meals are skills hunters need to know.

Hunters who are interested in learning how to process their own deer will have an opportunity to do so at a Missouri Department of Conservation's (MDC) "Field to Freezer" virtual program from 6:30-8 p.m. on Nov. 2. This program is open to all ages. People can register for this online program at:

<https://mdc-event-web.s3licensing.com/Event/EventDetails/196103>

At this free event, MDC Conservation Educator Lyle Whittaker will provide tips on how to field dress, skin, and butcher a harvested deer. Field dressing is an important skill for hunters to have, even if they plan to take their deer to a processing facility. For those who want to butcher their own deer, this clinic will show how to turn a harvested deer into neat packages of lean and healthy meat. Other topics covered will be supplies needed and regulations that pertain to stored venison.

Though this program is free, registration is required to participate. Use the link above. Registrants must provide an e-mail so a program link can be sent to them. This program will include a chat-based question-and-answer period where participants can interact with the presenters.

Staff at MDC facilities across the state are holding in-person and virtual programs. A listing of these programs can be found at mdc.mo.gov/events.



HOWTO transform parts of a harvested deer into venison jerky is one of the meat-processing tips people can learn about at a Nov. 2 MDC virtual program

Clay Chapman *Full-Time Taxidermist*

Red Oak Taxidermy

Phone: 573-764-4483 Cell: 573-619-5338



Send Us Your Game Pictures

Did your child get something this deer or turkey season you're proud of? Send it to us. We'll help you show it off!

Email your photo to: wardpub@fidnet.com
or bring it by our office at
106 E. Washington, Owensville.

GASCONADE COUNTY
Republican

Jeff Schuenemeyer



Red Barn Meat Processing

DEER PROCESSING

- Smoked Deer Sausage
- Summer Sausage • Snack Sticks
- Brats • Breakfast Sausage

We also process beef and pork

3676 Highway EE (1.5 miles south) • Owensville
Phone: 636.359.3159



CHESTEN ADKISON, above, stands next to the buck he harvested during the annual youth hunt. **CREED HOPINS**, above right, proudly holds onto his buck.



Swiss
MEAT & SAUSAGE CO.
SINCE 1969

Taste the Tradition

HOURS
MON-SAT: 9AM – 5PM
CLOSED ON SUNDAYS
2056 S. Hwy 19
Hermann, MO 65041
573-486-2086
swissmeats.com

NEW DEER PRODUCTS!

- BBQ Flavored + “Hawaiiapño” Venison Patties
- Mushroom + Swiss Cheese Bratwurst
- Sweet Bologna w/ Jalapeño + Pepperjack Cheese



Attention Deer Hunters: Accepting ONLY clean, BONELESS deer trim to be made into various SUMMER SAUSAGES, SNACK STICKS, BRATS, BURGERS and More! Using the same Award Winning recipes produced by Swiss Meat for the past 54 years!



Not a fan of Venison?
Call and order a beef or hog to fill your freezer!

Visit swissmeats.com/deer-sausages for complete product list and pricing.



GRELLNER TAXIDERMY

Matt Grellner
Taxidermist

Owensville, MO 65066

Shoulder Mounts ~ Life Size Mounts
~ Birds ~ Fish ~ Antler Mounts~
Small Animals ~ Antler Repairs



Phone: 573-437-7799 ~ Cell: 573-694-2287 ~ E-Mail: matthewjgrellner@yahoo.com



KANNON WARREN, above, proudly shows off his buck that won him second place in the annual Owensville Youth Deer Hunt. Kase Eiler, right, holds up a doe he took during the youth hunt with his father Sheriff Scott Eiler.

YOUTH DEER hunt photos are published at no charge, as space permits, in the Gasconade County Republican. Text photos to 573-619-9076 or email dwarden@wardpub.com. Please include the hunter's name and age, buck or doe, where the hunter is from, who they hunted with and if this is their first deer or buck.



FIND THE BEST TRUCK ACCESSORIES AT ACCESSORIES UNLIMITED



TRUXEDO
TRUCK BED COVERS
PRO X15
PREMIUM ROLL-UP TRUCK BED COVER

ALL-NEW,
PREMIUM ROLL-
UP COVER WITH
AN XTRA-LOW
PROFILE

RetraxPRO MX MATTE ALUMINUM BED COVER



The RetraxPRO MX retractable truck bed cover is part of our Premium Aluminum Series covers. The Premium Aluminum Series covers are constructed from industrial strength aluminum slats that provide unsurpassed strength and ruggedness. The matte finish on the RetraxPRO MX provides incredible scratch resistance and adds style to your truck. The compact storage container features a unique spiral track system that prevents the cover from coming into contact with itself as it opens and closes. The operation of this cover allows it to always stay flush to the rails and creates a dependable seal to help keep the elements out and protect your cargo.



AIR LIFT
AUTHORIZED
INSTALLER

UP TO **\$150** Consumer Mail-in
REBATE

Offer good for a limited time only

Squat Happens.

\$75 Rebate with qualifying Air Lift Compressor system/installed
\$75 Rebate with qualifying Air Spring Kit/installed

WeatherTech
FloorLiner™ DigitalFit®

1st, 2nd, 3rd Row & Cargo Liners
custom-fit for your vehicle to
provide absolute interior protection!

Available in:

Made in the USA

Complete Line Of Quality Accessories
www.EAccessoriesUnlimited.com

Accessories UNLIMITED LLC.

- Running Boards
- Tool Boxes
- Bug Shields
- Nerf Bars
- Bed Liners
- Bed Covers
- Professional Installation
- Performance Products
- Mud Flaps • Floor Mats
- Sprayed On Truck Liners
- Brake Controllers • Hitches
- Lift Kits & Much More...



5475 Hwy 100 East Washington, Mo.

(636) 390-9300

